



Wisescape®

...water efficient landscaping on the Palouse

Contact: Nichole Baker, Environmental Services Coordinator
Water Conservation and Sustainability
nbaker@ci.moscow.id.us | 208-883-7114

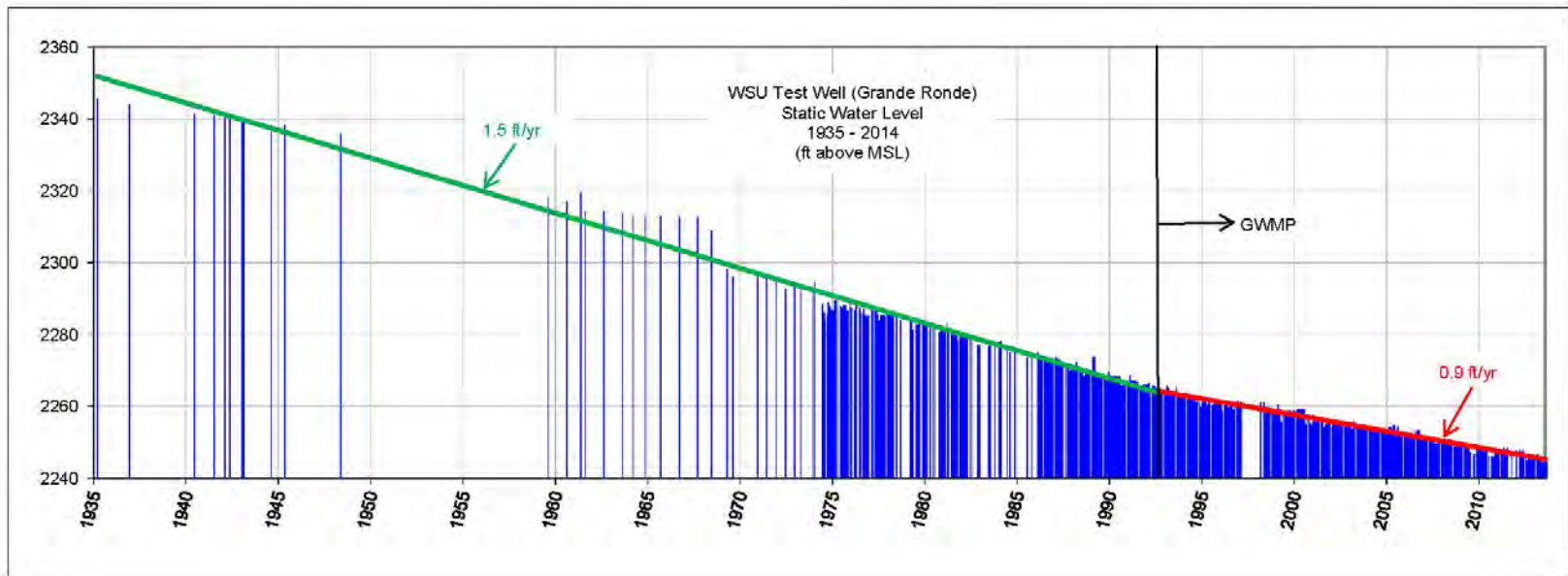


Water Conservation

Our water story



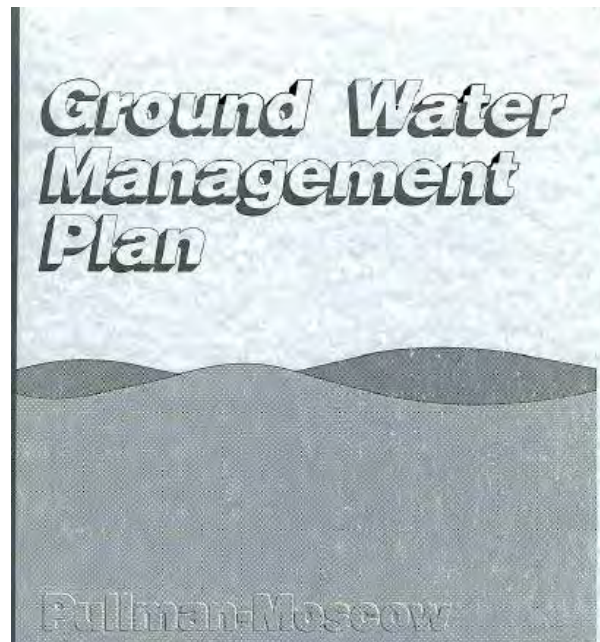
Grande Ronde Aquifer Declining Water Levels



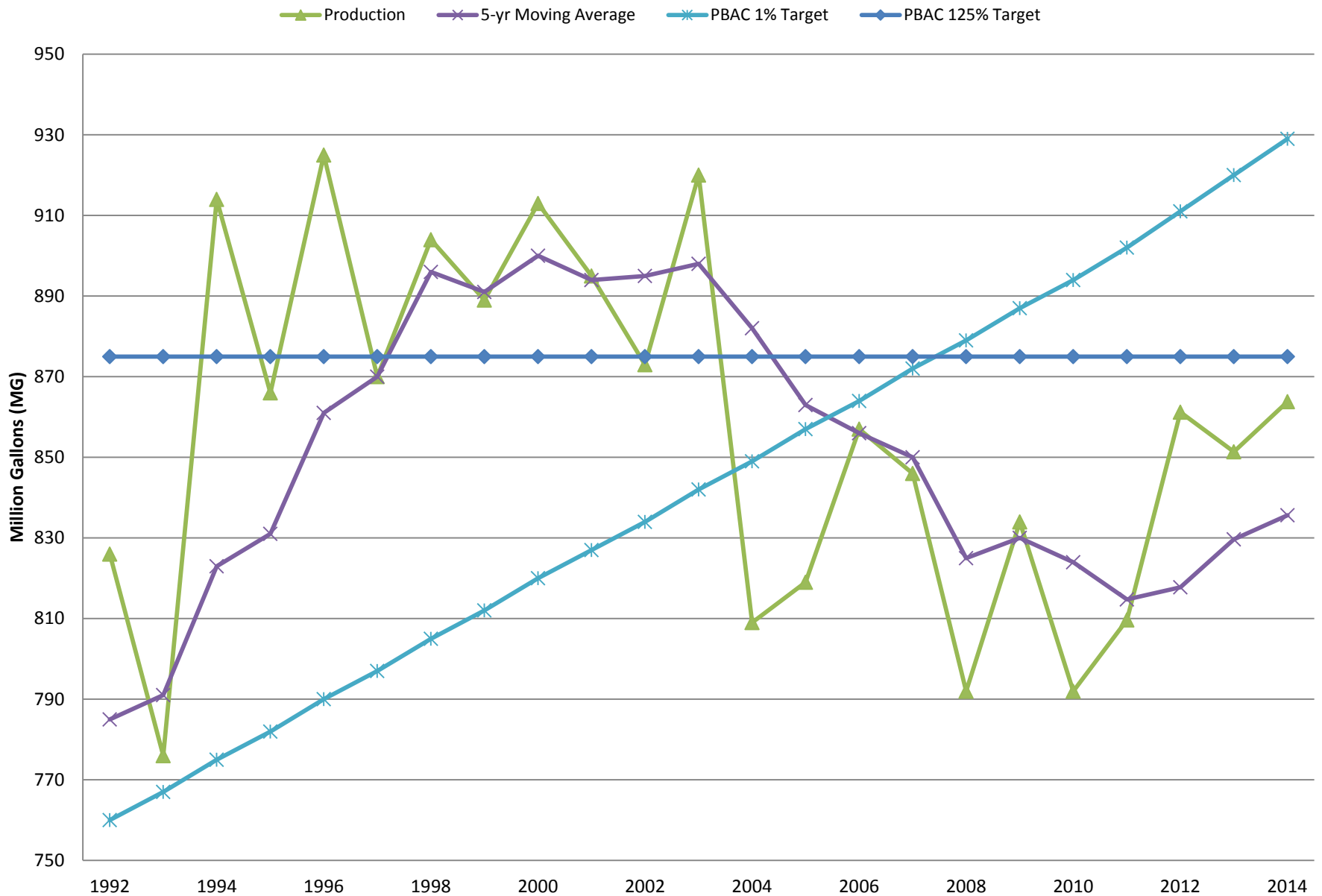
Water Production Goals



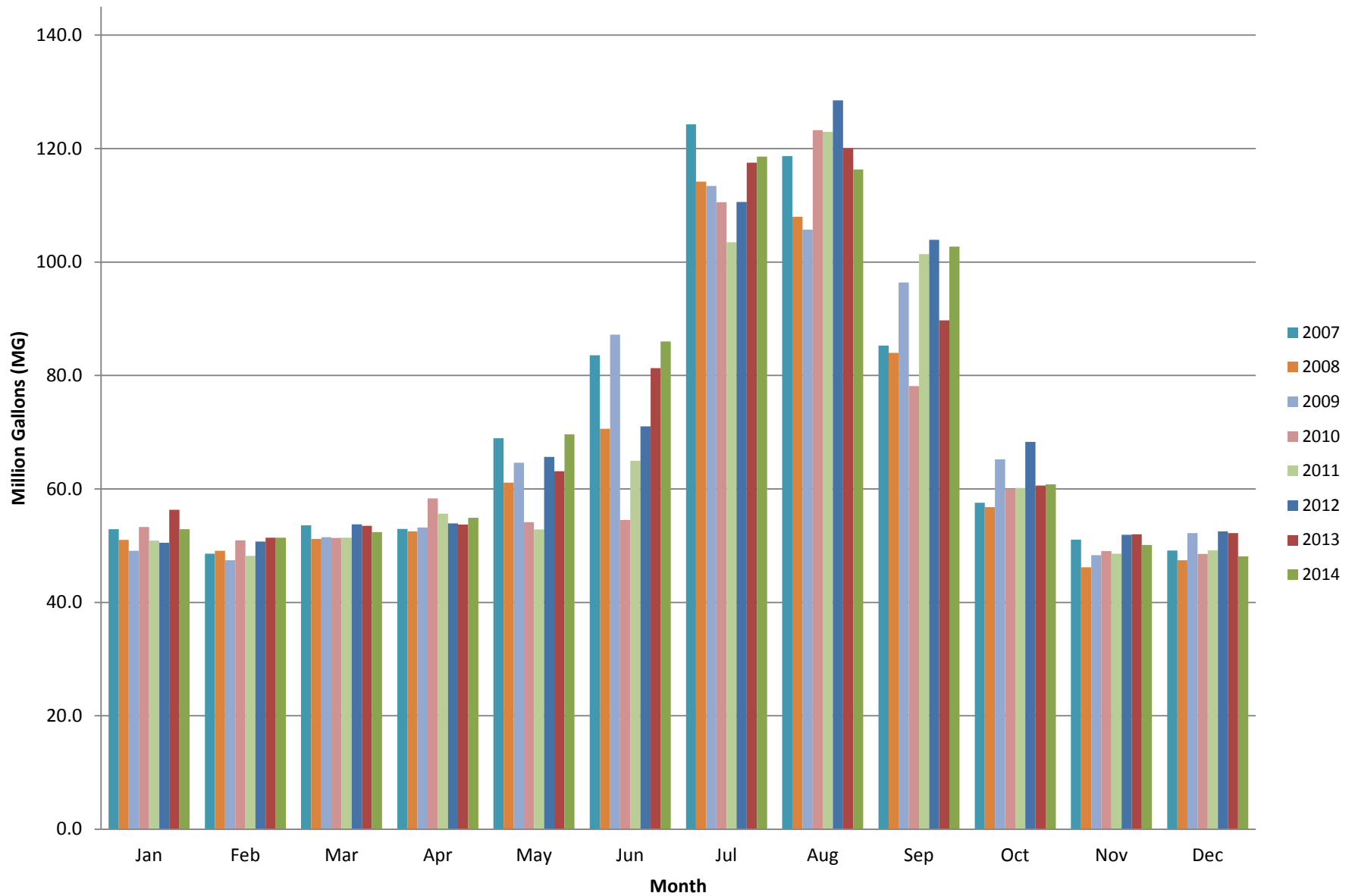
- PBAC
- 1992 Voluntary Goals



Moscow Water Production and PBAC Goals



City of Moscow Monthly Water Use (MG)



Wisescape Mayor's Award

2017 Wisescape Award

Nominate by Sept 15th



Wisescape
Approach

Nominate
Someone Today!

Award Recognition Program

*Landscaping for Aesthetics
and
Resource Conservation*



Wisescape
City of Moscow



Why Wisescape?

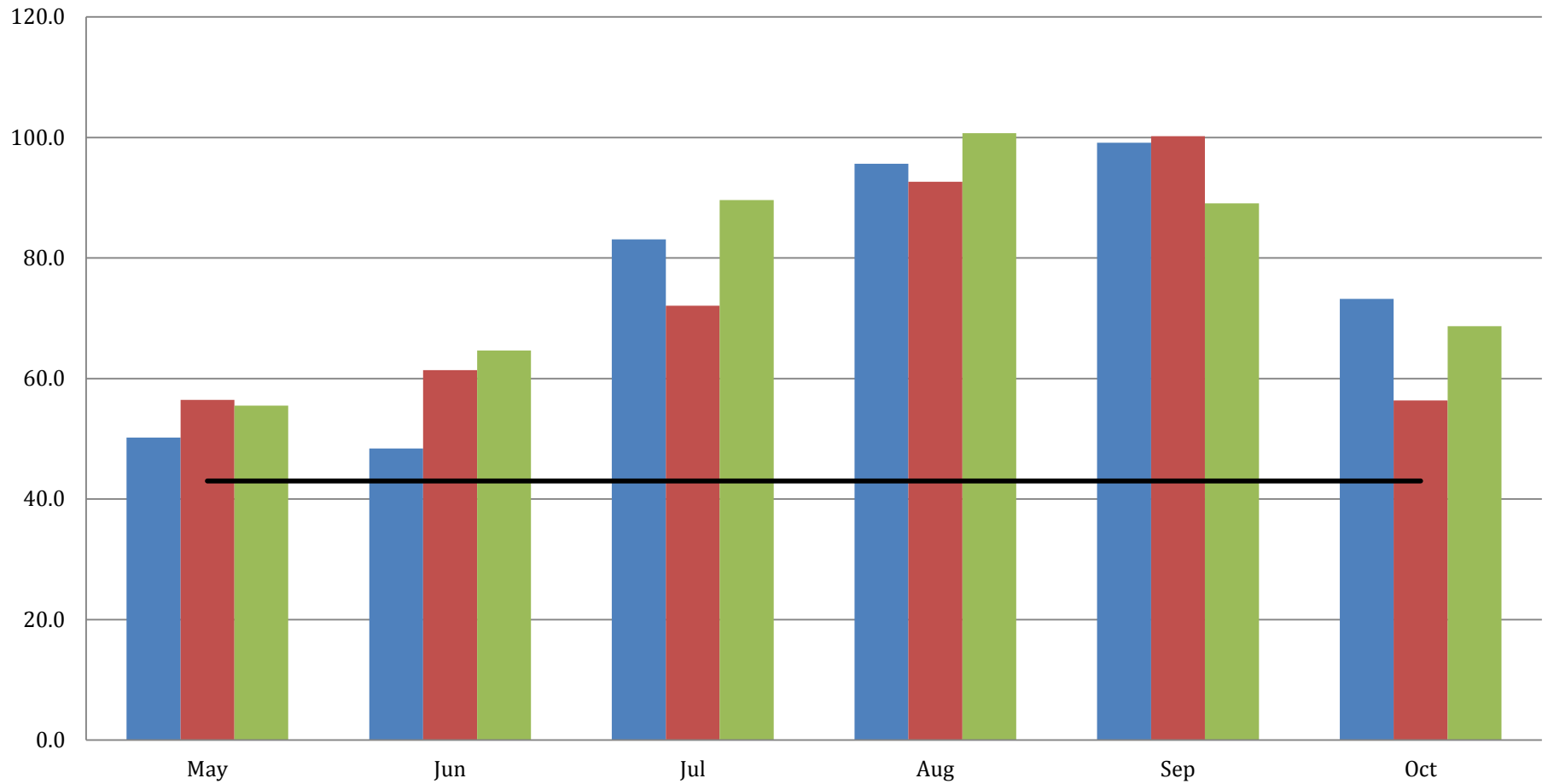
Save Resources

Regulatory Compliance



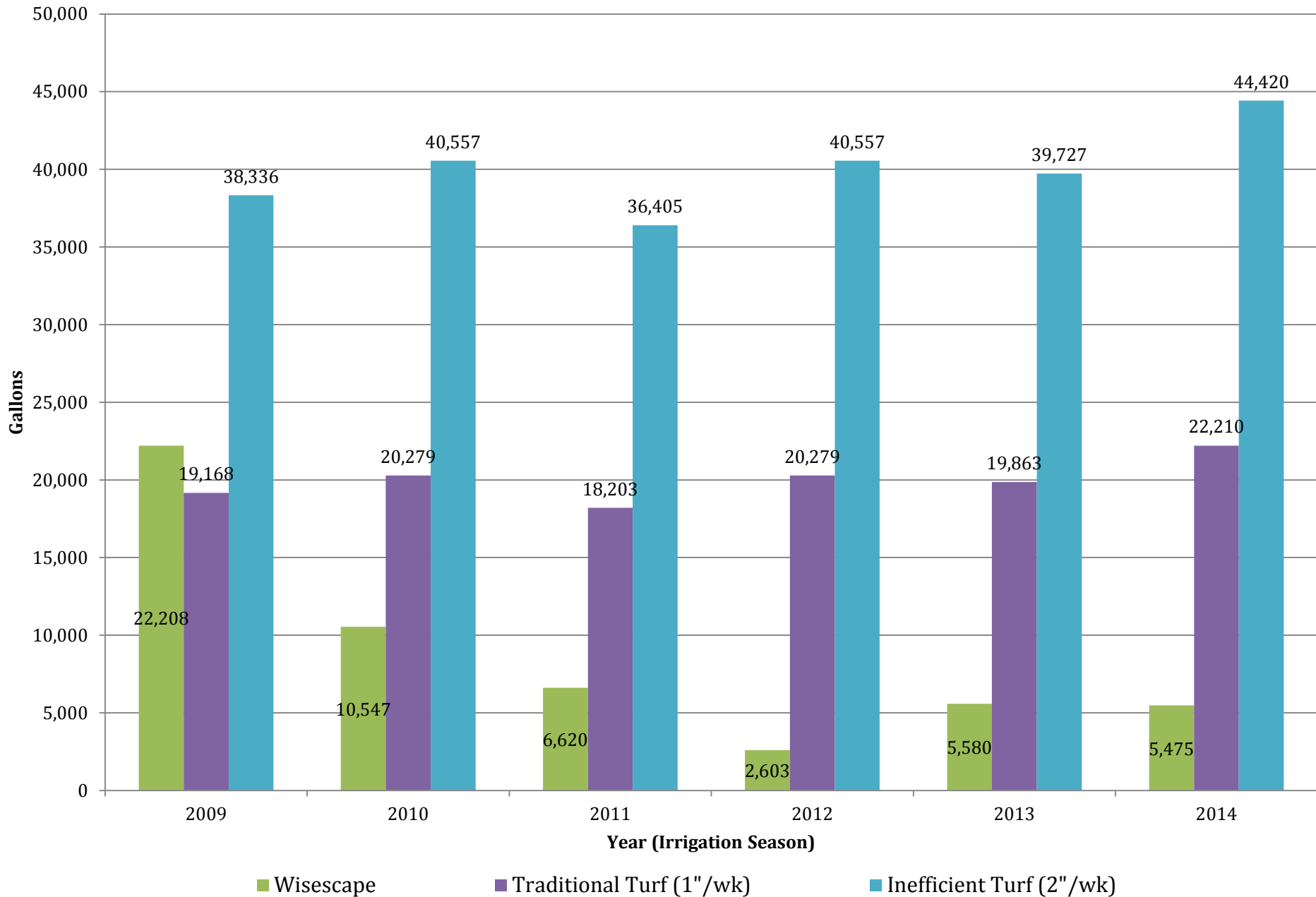
Peak Season Day Use Billed Only (MG)

2012 2013 2014 — Baseline (Average Indoor Water Use, 43 MG)



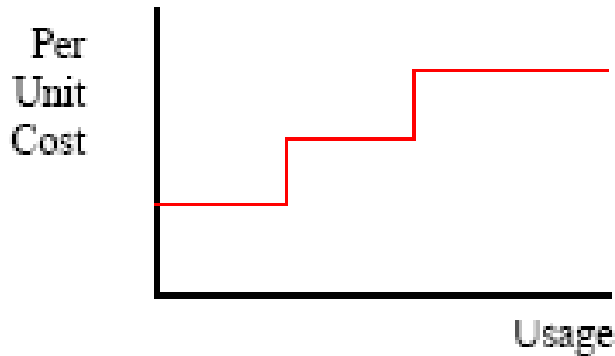
Why Wisescape? Save Water!

Demo Garden Irrigation Comparison for 1550 sq ft (gal)

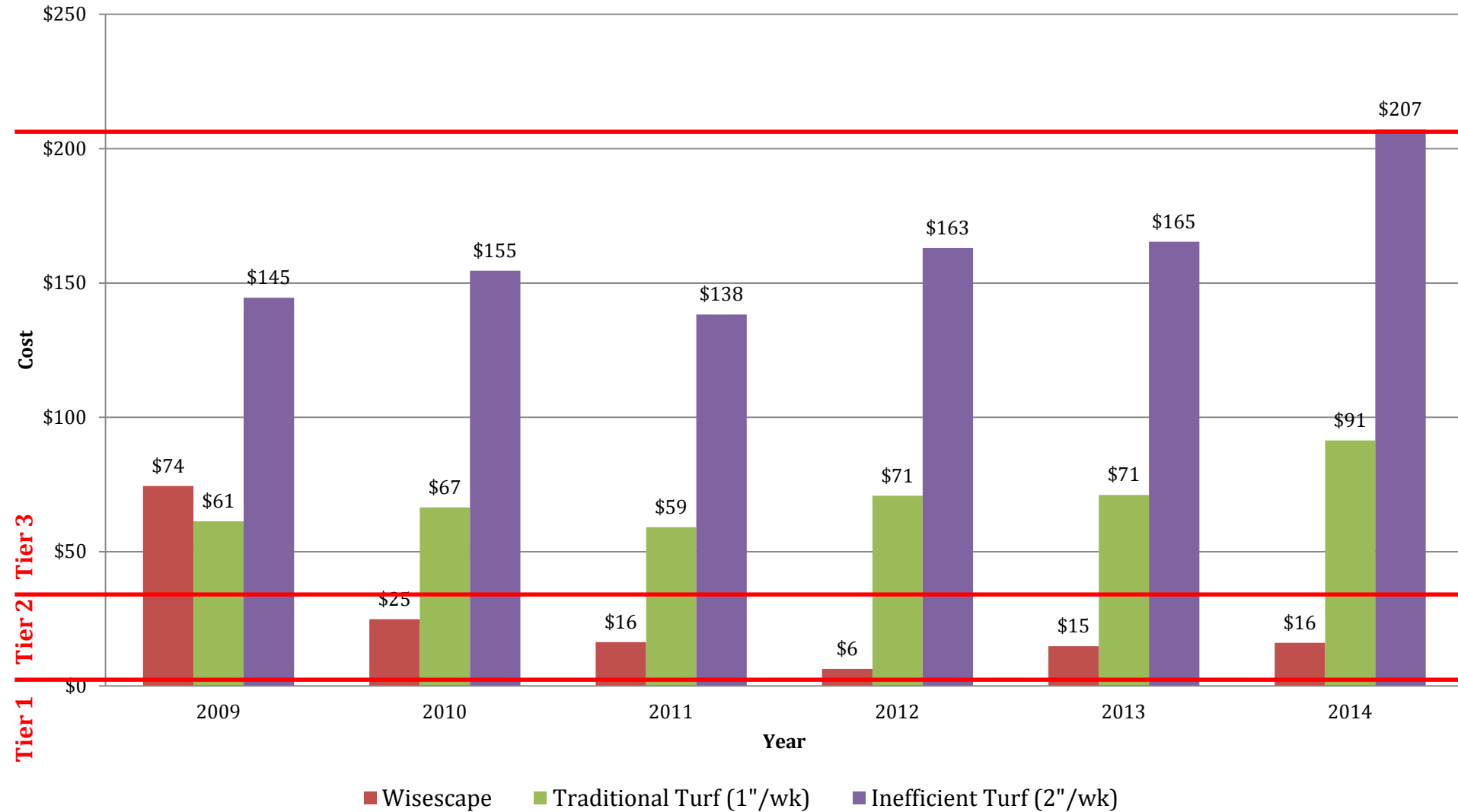


Tiered Billing Rates

- Established Oct 2005
- 3 Tiers – FY 2014 rates
 - 0-700 ccf, \$1.90
 - 701-2000 ccf, \$2.30
 - Over 2000 ccf, \$3.90



Irrigation Cost Comparison for 1550 sq ft (cost not including base rate)



Regulatory



- Irrigation Ordinance
 - Irrigation Season
- Water Waste Resolution
- Variance for New Landscapes

Other Benefits

- Urban Wildlife



Other Benefits

- Pollinators



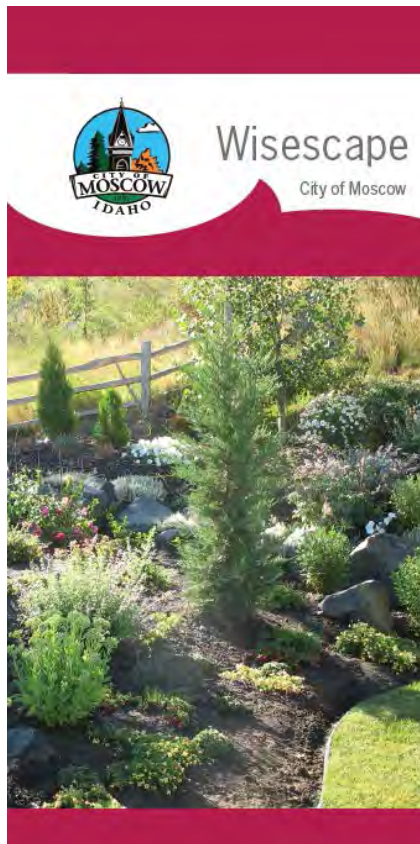
What is Wisescape?

Water efficient landscaping on the Palouse.



Wisescape Approach

Established in 2008



- Design

- Aesthetics, Practical, Limit traditional turf, Plant Zoning, Efficient Irrigation

- Reduced Resource Use

- Water, labor, fertilizer, pesticide, yard waste, and mowing savings.

- Soil - Enhancements

- Plant Selection – Site Specific

Wisescape Demo Garden

Established in 2009

Before

After



What is wrong with this picture?

- Watering Sidewalks
- Compact Soil
- Thirsty Turf
- Weeds
- Dry Spots

Wisescape to the rescue!



Design

- Limit Traditional Turf
- Soil Enhancements
 - Compost
 - Healthy Plants
 - Water Retention



Design

- Aesthetics
- Practical
- Limit Traditional Turf
- Colorful and Diverse



Xeric Design

- Rocks
- Natives
- Shrubs
- Semi-succulents
- Perennials



Natural Design

- Trees
- Semi-succulents
- Perennials
- Tolerant turf
 - High use areas.
 - Water plants, not sidewalks!
- Rocks



Plant Selection

- Microclimates
 - Sidewalks
 - Shady N vs. Sunny/Windy SW
 - Under Trees
- Plants adapted for this area.



Efficient Irrigation

- The right tool for the right job.
- Rotary heads that can withstand the Palouse wind.



Efficient Irrigation

- Drip System
 - Water only the roots
 - Reduce Weeds

Soil Enhancements

- Mulch
 - Reduce Weeds
 - Water Retention

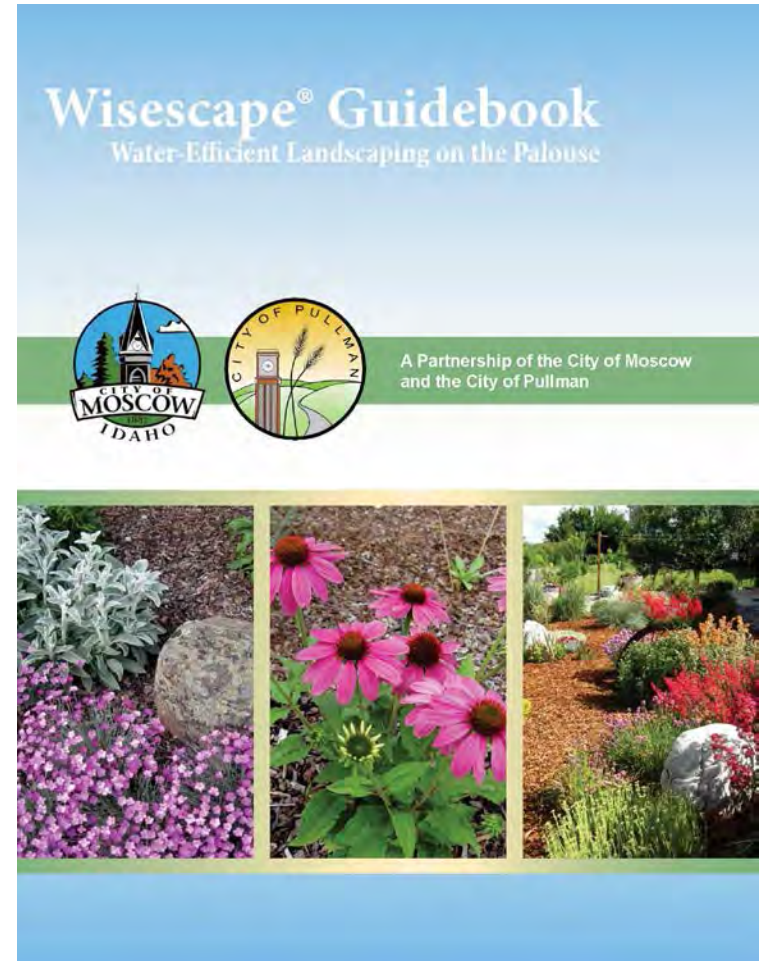


2015 WCP

- Council Approval of Package C
 - Adopted Feb 1, 2016 | 10 year plan period (2016-2025)
- Conservation Program Expansions
 - Fixture Rebates
 - Lawn to Wisescape® Rebates
 - Landscape Guidebook
- Approved Rebates
 - Feb 2, 2016 to present

Guidebook Details

- Wisescape® Guidebook
 - Landscape Guidebook
 - SF
- Collaborate with Pullman



Lawn to Wisescape® Rebate Details

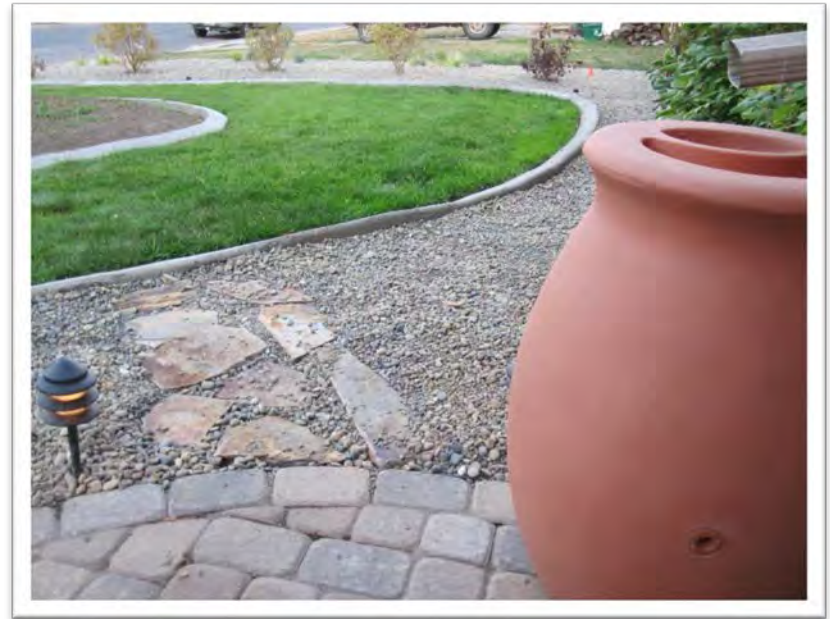
- Lawn Rebate
 - \$150 lawn replacement rebate (1 allowed) for customers that remove 300+ square feet of existing lawn turf and replace it with water efficient landscaping – **SF/MF/CI**
- Approval process
 - Pre and post site inspections

Lawn to Wisescape® Rebate Savings

Traditional Lawn = 0.623 gal per ft²/wk



Wisescape = 0.263 gal per ft²/wk



Annual household water savings for transitioned 1200 ft² = 9,300 gallons

Savings and Cost Analysis

Lawn to Wisescape® Rebate – Year 2016

Total Households	14
Total Turf Removal (ft²)	22,220
Average Turf Removal (ft²)	1,587
Pending Rebates	14
Savings per ft²/wk (gal)	0.36
Annual Savings (gal)	173,583
Total Cost to the City	\$2,100.00
Cost \$/1,000 gallons saved	\$1.21
Cost \$/1,000 gallons saved (with additional savings)	\$0.85

Estimates from 2015 WCP

Cost \$/1,000 gallons saved	\$2.42
Average Turf Removal (ft²)	794

With Additional Savings Cost \$/1,000 gallons saved

Water Treatment Savings	\$0.36
--------------------------------	--------

↑
McConnell Hist. Mansion →
East City Park →



McConnell Hist. Mansion →
East City Park →



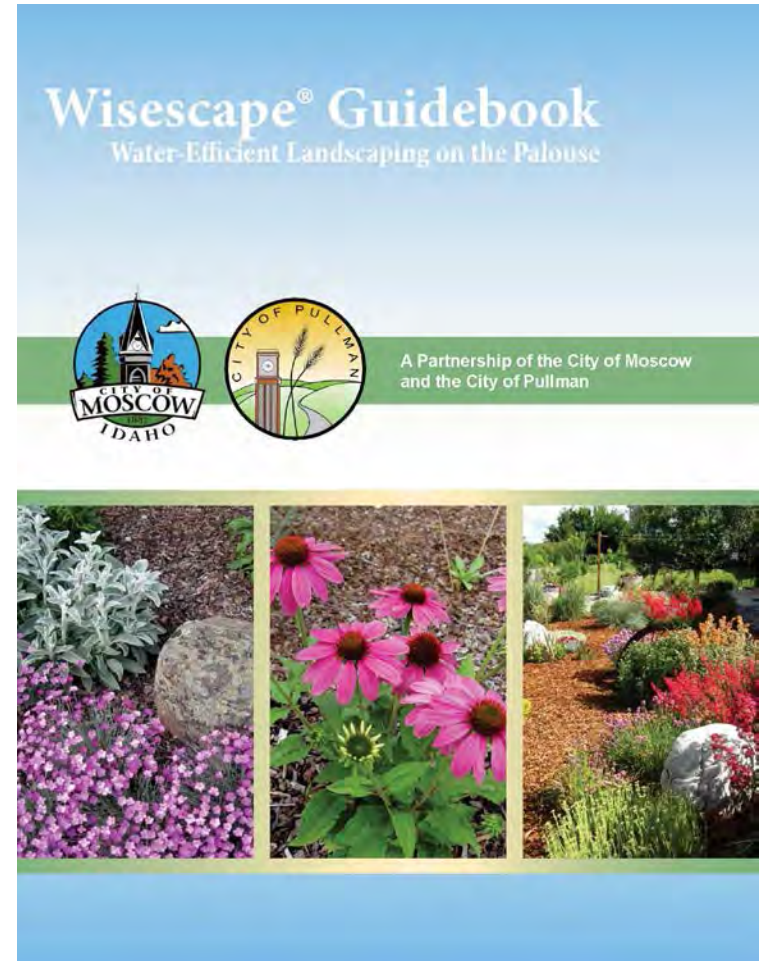
Historic
MOSCOW
CITY HALL
208
EAST THIRD
Third Street Gallery

BIKE
JUST GO
SLOW
YIELD TO
PEDESTRIANS



Guidebook Details

- Current Draft
 - Edits completed in-house
 - Edits received from City of Pullman





Visit Us:
Wisescape Demo Garden
Water Dept, 201 N Main

