



July 23, 2018

Idaho Washington Aquifer Collaborative
Attn: Dan Kegley, President
PO Box 1822
Post Falls, ID 83877

RE: RFP Response – Model Efficient Irrigation & Landscape Design Standards

Dear Dan:

Architects West, in association with Mike Galante, is pleased to offer this as our response to your request for services for the above referenced project. After review of the information included in the RFP, we would suggest the following workplan for your consideration:

Task 1 – Scope/Fee Finalization with IWAC Board

Task 2 – Listening Tour – Engagement of the design, nursery, contracting community and interested community members in both the greater Spokane area and in Kootenai County through a series of open houses to provide comment on the draft Standards document

Task 3 – Data Summarization – Translation of input gathered from Listening Tour to a summary of proposed actions and next steps

Task 4 – Ordinances & Standards Research – Review of regional ordinances in place as well as national sustainability standards such State of Washington Evergreen standards, the Sustainable Sites Initiative, and EPA Watersense principles for alignment and applicability to the draft Standards document

Task 5 – Draft Recommendations to Board related to:

- a) upgraded content for Model Standards document
- b) evolution of Model Standards document to a model ordinance, or critical pieces for adoption/inclusion into existing ordinances, or an aspirational standards/guidelines document
- c) recognitions/awards/P.R. program to recognize significant executed works

Based on the above, we anticipate the following allocation of fees:

Fee Estimate:

Professional Services:	\$19,000.00
Expenses, travel	<u>\$ 1,000.00</u>
Total	\$20,000.00

We have included critical resumes for Mike Galante, myself and Keith Dixon, who also will be working on

this project to show the extent of our experience in the professions that directly relates to the effort.

We look forward to further discussions with the Board regarding the project and to the opportunity to work on the project.

Sincerely,
ARCHITECTS WEST, INC.

A handwritten signature in black ink, appearing to read "Jonathan Mueller", with a large, sweeping flourish above the name.

Jonathan Mueller, FASLA, PLA



About Architects West

Architects West is a leading, award-winning, regional architecture and land planning firm with a successful 45-year history specializing in the design of public facilities. Having successfully completed more than 250 similar projects throughout the Inland Northwest, Architects West has earned the trust of our clients and the communities they serve. Our experience in the careful stewardship of community resources in site and facility design, and continual pursuit of excellence in service delivery has benefited the end users throughout Eastern Washington and beyond.

While it is significant that we have been in business for 45 years, what has really allowed us to grow and broaden our design practice is our ability to:

- **Provide Service** that is relentless, responsive, efficient, and effective
- **Deliver Value** that reflects well-placed investment of public money, that is also effectively and responsibly used
- **Provide Engaging Design Processes** that are participatory, RSVP-oriented, enlightening, and destination focused
- **Foster Meaningful Influence** on the everyday lives of our clients and end users through the built environment
- **Produce a Lasting-legacy** that results from grounded design matched with responsible design expression
- **Advance** and project our **Firm Culture** allowing us to be servants, advisors, makers and leaders

Architects West offers in-house landscape architectural design as a means to more fully address our clients' needs. This studio is managed by senior professionals that have extensive experience with a myriad of site design projects, having completed numerous works in five western states. These projects include a wide range of public facilities. With a staff of six, our landscape architecture division can respond to the immediate site design production needs of the project, assuring timely completion.

Architects West, located in Coeur d'Alene, Idaho, is incorporated in the State of Washington as an Employee Stock Ownership Plan (ESOP), governed by a board of directors composed of principals. As shareholders, every member of our team understands that success and failure depend upon the quality of service we provide to our clients.

It is the standard practice of Architects West to award sub-consultant contracts for professional consulting services to qualified businesses without regard to race, religion, color, creed, national origin, sex, age, or disability. We provide all qualified professional consultants, including minority and women-owned businesses (MWBE), equal access and opportunity to participate fully in all aspects of professional consulting services and construction activities.

In addition, sub-consultant teaming decisions are also a function of general experience brought to the project need, past performance, specialized expertise offered, and as directed, client preference. We strive to provide the most responsive team to assure the best result for clients.

Firm Size

Our team of 30 staff provide our clients with robust resources to meet the needs of large projects, while still maintaining a personal connection with each client. Architects West has grown and benefited from minimal staff turnover, which gives our clients a team that has an average of more than 12 years of working together. This expertise and longevity of staff association allow us to meet our clients' needs in an increasingly sophisticated building environment.

In-House Services

- Pre-bond planning
- New facilities design
- Modernization design
- Facility & campus master plans
- Site assessments
- Feasibility studies
- Land planning
- Landscape architecture
- Irrigation/planting design
- Stormwater management
- Vehicle circulation
- Parking studies
- Studies and surveys
- Needs assessment
- Roofing replacements
- Maintenance projects
- ADA/life safety upgrades
- Cost estimates
- Budget management
- 2D & 3D renderings
- Graphic design

CONTACT



Scott Fischer
President
 210 East Lakeside Avenue
 Coeur d'Alene, ID 83814
 t. 208.667.9402
 scottf@architectswest.com
 www.architectswest.com

STAFF

Registered Architects	10
Technical Support/Drafting	10
Landscape Architects	6
Administration	4
Total	30

Principals	5
LEED Accredited Professionals	4



Water Consulting Management, LLC
PO Box 235
Otis Orchards, WA. 99027

Mike Galante, Owner
208.661.9182 mikegalante.1@gmail.com

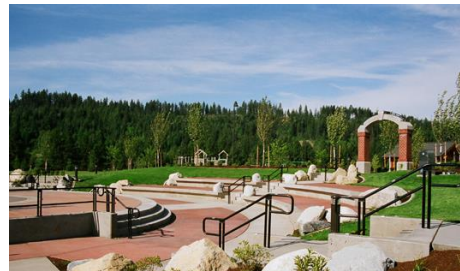
Owner – Company Bio

Mike Galante has been a resident of North Idaho and Eastern Washington for over 30 years. He recently retired from North Kootenai Water & Sewer District, serving as the District Manager for the past 13 year. Prior to that, he owned and operated a water filtration company for 5 years and for 17 years before that as a project manager of a well drilling and pump installation company in Hayden.

Having served on a number of volunteer boards, including the Kootenai County Aquifer Protection District, the Idaho Washington Aquifer Collaborative, SVRP Aquifer Atlas committee, Kootenai County One Call, and the Rathdrum Prairie Comprehensive Aquifer Management Plan (CAMP).

Water Consulting Management offers solutions for small public and private water systems in Kootenai and Spokane Counties. Services offered:

- System Management
- Future Planning
- Regulatory Compliance
- Rate Studies
- Engineering Services (out sourced)
- Human Resources
- GIS mapping
- Project Funding (out sourced)
- Billing services
- Certified Operator, Idaho & Washington



JONATHAN MUELLER, FASLA

Principal Landscape Architect / Jon will act as a principal standards resource for the project. He will work closely with committee members, the public and the planning team in conceptualization, development and consideration of alternative solutions for the effort.

As a *Senior Landscape Architect* with Architects West, Mr. Mueller has over thirty-nine years experience with a variety of project types, including parks and recreation planning and design, urban design, campus planning and public space design projects. This project experience includes programming, analysis, conceptualization, design development, construction documents and contract administration. He also has played an active role in the management of numerous land use planning projects including consultant management, permitting, public involvement, opposition encounter workshops, and agency coordination.

Representative Projects

Idaho State Parks:

Priest Lake State Park Headquarters, *Priest Lake, ID*
Farragut State Park-Campground Redevelopment, *Bayview, ID*
Hells Gate State Park-Lewis & Clark Center, *Lewiston, ID*
Ponderosa State Park-Misc. Planning for Projects, *McCall, ID*
Heyburn State Park Welcome Center Planning, *near Plummer, ID*
Round Lake State Park – Access Improvements, *Sandpoint, ID*
Lake Coeur d’Alene Parkway State Park, *Coeur d’Alene, ID*

Montana State Parks:

Chief Plenty Coups State Monument, near *Pryor, MT*
Lake Elmo Recreation Site Alternatives, *Billings, MT*

Regional Parks & Parks Recreation Planning:

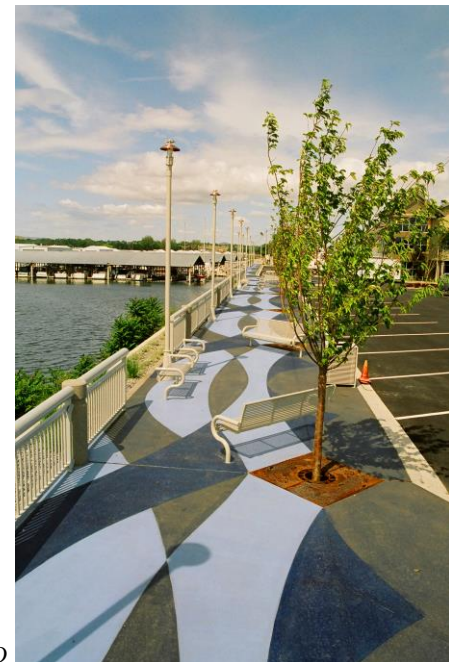
Rathdrum Mountain Development Plan, *Rathdrum, ID*
Julia Davis Park Master Plan, *Boise, ID*
Hayden Comprehensive Park Plan, *Hayden, ID*
Bozeman Deaconess Master Parks Plan, *Bozeman, MT*
City Park Vision Plan, *Coeur d’Alene, ID*
Creek of Qualchan Golf Feasibility Study, *Spokane, WA*
Prineville Golf Course Feasibility Study, *Prineville, OR*
Colstrip Comprehensive Park Plan, *Colstrip, MT*

Community Parks:

Majestic Park, *Rathdrum, ID*
Landings Park, *Coeur d’Alene, ID*
Riverstone Park, *Coeur d’Alene, ID*
Croffoot Community Park, *Hayden, ID*
Ramsey Community Park, *Coeur d’Alene, ID*
Sky Prairie Community Park, *Spokane, WA*
Canfield Community Park, *Coeur d’Alene, ID*
Stillwater Park Phases 1 & 2, *Colstrip, MT*
Coal Miner’s Memorial Park, *Red Lodge, MT*
Shakespeare Theater Siting Study, *Boise, ID*
Lewiston Community Park Master Plan, *Lewiston, ID*
McEuen Playfield Redevelopment Strategy, *Coeur d’Alene, ID*
Cherry Hill Community Park Refinements Plan, *Coeur d’Alene, ID*
Warm Springs Community Park Master Plan, *Boise, ID*
Coeur d’Alene Dog Park Master Plan, *Coeur d’Alene, ID*
Pavilion Park, *Liberty Lake, WA*
Cody Ballfield Complex, *Cody, WY*

Neighborhood Parks:

Trail’s End Park, *Coeur d’Alene, ID*
Bluegrass Park, *Coeur d’Alene, ID*
Sunset Park, *Coeur d’Alene, ID*
Friendship Park, *Spokane, WA*



Education:
BACHELOR OF LANDSCAPE ARCHITECTURE
1978
UNIVERSITY OF IDAHO

Registration:
LANDSCAPE ARCHITECT:
IDAHO, WASHINGTON, OREGON
and CLARB CERTIFICATE #234

Employment:
STERLING LANDSCAPE ARCHITECTS
BOISE, IDAHO
1979-1980

WIRTH ASSOCIATES
BILLINGS, MONTANA
1980-1984

HATCHMUELLER, PC
COEUR D’ALENE, IDAHO
1999 to 2007

ARCHITECTS WEST
COEUR D’ALENE, IDAHO
1984-1999
2007-PRESENT

Affiliations:
AMERICAN SOCIETY OF LANDSCAPE ARCHITECTS, IDAHO- MONTANA (IMC) CHAPTER; President 1988-89, 1996-97; Chapter Trustee 2001-2007; Elected to Council of Fellows-2007
National Vice-president, Government Affairs 2008-09
National President-elect. 2009-2010
National President 2010-2011

KOOTENAI COUNTY PLANNING & ZONING COMMISSION;
MEMBER 1993 to 2002; Chairman 1995-96, 1999-2000

COEUR D’ALENE PARKS & RECREATION COMMISSION; MEMBER 1985 to 1990

IDAHO STATE BOARD OF LANDSCAPE ARCHITECTS, MEMBER 1987-1995

LEADERSHIP COEUR D’ALENE, GRADUATE 1999

KOOTENAI PERSPECTIVES, MEMBER, 2001-2005

EXCEL FOUNDATION
MEMBER 2001-2004

RATHDRUM PRAIRIE OPEN SPACE STEERING COMMITTEE

COEUR D’ALENE PARKS FOUNDATION – MEMBER 2004-2012

COEUR D’ALENE DESIGN REVIEW COMMISSION-MEMBER 2005-2013



**Professional
Recognition:**

IDAHO/MONTANA ASLA

MERIT AWARD

EDNETICS CORPORATE
HEADQUARTERS PROJECT
2013

MERIT AWARD

EDUCATION CORRIDOR
ENHANCEMENT PROJECT
2013

HONOR AWARD

CD'A LAKE DRIVE ENHANCEMENT
PROJECT
2011

MERIT AWARD

SKY PRAIRIE COMMUNITY PARK
2007

MERIT AWARD

GREAT BASIN COLLEGE CAMPUS
ENHANCEMENTS
2005

MERIT AWARD

LEWIS-CLARK DISCOVERY CENTER
2005

HONOR AWARD

SHEET METAL DETAILING
2003

MERIT AWARD

HIDDEN LAKES GOLF RE-DEVELOPMENT
2003

HONOR AWARD

WASHINGTON WATER POWER
COMBUSTION TURBINE
1997

MERIT AWARD

COEUR D' ALENE DOWNTOWN
REVITALIZATION PHASES 1 & 2
1997



IDAHO SMART GROWTH

GROW SMART AWARD
NORTH IDAHO COLLEGE
NORTH CAMPUS DEVELOPMENT
2012

**COUNCIL OF EDUCATION FACILITY
PLANNERS INTERNATIONAL**

PROJECT OF DISTINCTION

FERNAN ELEMENTARY
1994

PROJECT OF DISTINCTION

LES BOIS JUNIOR HIGH SCHOOL
1994

PROJECT OF DISTINCTION

LAKE CITY HIGH SCHOOL
1995



Neighborhood Parks: (Con't)

Underhill Park Improvements, *Spokane, WA*
Westgate Park, *Spokane, WA*
Corbin Park Improvements, *Spokane, Washington*
Northshire Park, *Coeur d'Alene, ID*
Stoddard Park Master Plan, *Hayden, ID*
Shadduck Park Master Plan, *Coeur d'Alene, ID*
Corbin Park Master Irrigation System, *Spokane, WA*
Johnson Family Park Master Plan, *Coeur d'Alene, ID*
Loma Vista Park Improvements, *Spokane, WA*
Antelope Park, *Colstrip, MT*
Cimarron Park, *Colstrip MT*
Hollister Park, *Colstrip, MT*
Sweetgrass Park, *Colstrip, MT*

Linear Park/Trail Planning & Design:

North Idaho Centennial Trail Master Plan, *Kootenai County, ID*
North Idaho Centennial Trail Phases 1 - 4 , *Kootenai County, ID*
Paradise Path, Rayburn to Downtown, *Moscow, ID*
Seltice Way Bike Paths, *Post Falls, ID*
Prairie Trail Connector, *Coeur d'Alene, ID*
Kathleen Avenue Bike Path, *Coeur d'Alene, ID*
Fieldstone Residential Community Bike Path System, *Post Falls, ID*
Lewiston Community Park Bike Path Ph. 1, *Lewiston, ID*
Hawk's Nest Residential Community Bike Path System,
Coeur d'Alene, ID
Foxtail Residential Community Bike Path System, *Post Falls, ID*
Strawberry Field Residential Community, *Hayden, ID*

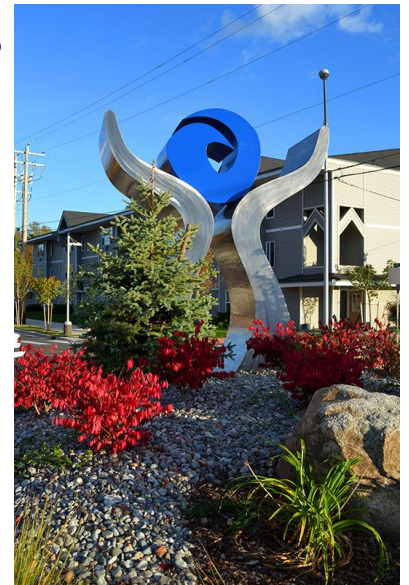
Streetscape & Public Space Projects:

Spokane Valley City Hall, *Spokane Valley, Washington*
Post Falls City Hall, *Post Falls, ID*
Meridian City Hall, *Meridian, ID*
Coeur d'Alene Public Library, *Coeur d'Alene, ID*
Port Kennewick Office Waterfront, *Kennewick, WA*
Northwest Boulevard Project, *Coeur d'Alene, ID*
Meyer Health Science Building, *Coeur d'Alene, ID*
I-90-Northwest Boulevard Interchange, *Coeur d'Alene, ID*
US 95-Northwest Boulevard Interchange, *Coeur d'Alene, ID*
West Seltice Revitalization Project, *Post Falls, ID*
North Idaho College Library, *Coeur d'Alene, ID*
Lakeside Avenue Project, *Coeur d'Alene, ID*
Sherman Avenue Project, *Coeur d'Alene, ID*
Wilbur Downtown Improvements, *Wilbur, WA*
Chewelah Downtown Improvements, *Chewelah, WA*
Plains Indian Museum North Court, *Cody WY*
Butte Uptown Plan, *Butte, MT*

College and University Planning -

Designer/Landscape Architect-of-Record:

Student Wellness Recreation Center, North Idaho College,
Coeur d'Alene, ID
Career Technical Education Building, North Idaho College,
Rathdrum, ID
Education Corridor Infrastructure Improvements, *Coeur d'Alene ID*
North Idaho College Campus Entry Monuments, *Coeur d'Alene, ID*
North Idaho College Parking Lot & Open Space Project,
Coeur d'Alene, ID
Collaborative Education Facility, North Idaho College,
Coeur d'Alene, ID
Access Plan, North Idaho College, *Coeur d'Alene, ID*



**Professional
Recognition (Con't):**

IDAHO/MONTANA ASLA

1997

MERIT AWARD
LAKE CITY HIGH SCHOOL

1997

MERIT AWARD
LES BOIS JUNIOR HIGH SCHOOL

1993

MERIT AWARD
NORTH IDAHO CENTENNIAL
TRAIL

1992

**IDAHO SMART
GROWTH**

GROW SMART AWARD
NORTH IDAHO COLLEGE
NORTH CAMPUS
DEVELOPMENT

2012

**COUNCIL OF EDUCATION
FACILITY PLANNERS
INTERNATIONAL**

PROJECT OF DISTINCTION
FERNAN ELEMENTARY

1994

PROJECT OF DISTINCTION
LES BOIS JUNIOR HIGH SCHOOL

1994

PROJECT OF DISTINCTION
LAKE CITY HIGH SCHOOL

1995



Great Basin College Industrial Technology Building, *Elko, NV*
North Idaho College Health Sciences Building, *Coeur d'Alene, ID*
Vandal Athletic Center Expansion, *Moscow, ID*
University of Idaho Ad Lawn Tennis Courts, *Moscow, ID*
University of Idaho PEB Tennis Courts, *Moscow, ID*
Great Basin College Campus Enhancement Project, *Elko, NV*
North Idaho College Main Campus Entry, *Coeur d'Alene, ID*
North Idaho College Library, *Coeur d'Alene, ID*
Business Technology Incubator, *Moscow, ID*
Woodward Stadium Landscape Improvements, Eastern
Washington University, *Cheney, WA*
Parking Lots 25, 15, 62 & 66, University of Idaho, *Moscow, ID*
Library Parking Lot, North Idaho College, *Coeur d'Alene, ID*
University of Idaho Boiler Enhancement, & Street Tree Project
Moscow, ID



Landscape Architect/Planner:

Planning Consultant, College of Western Idaho, *Nampa, ID*
North Idaho College/University of Idaho-Coeur d'Alene Vision
Plan - *Coeur d'Alene, ID*
Transportation Education Facility Development Plan, Lewis-Clark
State College, *Lewiston, ID*
Wenatchee Valley College Vision Plan, *Wenatchee, WA*
University Place, *Idaho Falls, ID*; Joint University of Idaho/Idaho
State University branch campus
University of Idaho Research Park Master Plan, *Post Falls, ID*
Great Basin College Vision Plan, *Elko, NV*
Sheridan College Campus Master Plan, *Sheridan, WY*
University Services Center, University of Idaho, *Moscow, ID*
Oak Street Housing Plan, Washington State University, *Pullman, WA*



K Through 12 Education:

High Schools -

Kennison Field Development, *Hermiston, OR*
Hermiston High School Master Plan, *Hermiston, OR*
Canyon Ridge High School, *Twin Falls, ID*
Lake City High School, *Coeur d'Alene, ID*
Post Falls High School, *Post Falls, ID*
Timberline High School Conversion, *Boise, ID*
Pendleton High School, *Pendleton, OR*
Bishop Kelly High School Master Plan, *Boise, ID*
Wood River High School Master Plan, *Hailey, ID*
Lewiston High School Master Plan, *Lewiston, ID*
Sandpoint High School, *Sandpoint, ID*
Priest River High School, *Priest River, WA*
Rochester High School, *Rochester, WA*
Colville High School, *Colville, WA*
Bridgeport High School, *Bridgeport, WA*
Gooding High School, *Gooding, ID*
Davenport High School, *Davenport, WA*
Coeur d'Alene High School Sports Complex, *Coeur d'Alene, ID*
Moscow High School 400 Meter Track, *Moscow, ID*
Eureka High School, *Eureka, NV*
Riverside, High School, *Riverside, WA*
Medical Lake High School, *Medical Lake, WA*
Entiat K-12 School, *Entiat, WA*





High Schools (Con't)

Eden K-12 School, *Eden Prairie, ID*
Soda Springs K-12 School, *Soda Springs, ID*

Junior High/Middle Schools -

Woodland Middle School, *Coeur d' Alene, ID*
River Glen Junior High School, *Boise, ID*
Les Bois Junior High School, *Boise, ID*
James Chase Middle School, *Spokane, WA*
Eagle Middle School, *Eagle, ID*
Brewster Middle/High School, *Brewster, WA*
Southeast Boise Junior High School, *Boise, ID*
Lakes Middle School, *Coeur d'Alene, ID*
West Valley Middle School, *Yakima, WA*

Elementary Schools -

Sage Elementary School, *Elko, NV*
The Borah Project, *Coeur d'Alene, ID*
Hayden Meadows Elementary School, *Hayden, ID*
Fernan Elementary School, *Coeur d'Alene, ID*
Skyview Elementary School, *Coeur d'Alene, ID*
Prairieview Elementary School, *Post Falls, ID*
Sagle Elementary School, *Sagle, ID*
Okanogan, Elementary School, *Okanogan, WA*
Tonasket Elementary School, *Tonasket, WA*
Idaho Hill Elementary School, *Eastport, ID*
Bullion Road School, *Elko, NV*
Medical Lake Elementary School, *Medical Lake, WA*
Riyadh Diplomatic Quarters Elementary Schools, *Riyadh, Saudi Arabia*

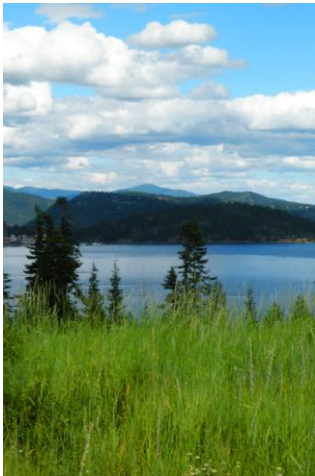
Impact Assessment/Mitigation Projects:

The Sanders Beach Project, *Coeur d'Alene, ID*
Wastewater Treatment Plant Buffer Studies, *Coeur d'Alene, ID*
SR 97 Guardrail & Road Widening Project, *Coeur d'Alene, ID*
Kootenai County Solid Waste Facility Visual Impact Assessment & Buffer Plan, *Fighting Creek, ID*
Avista Combustion Turbine Buffer Plan, *Rathdrum, ID*
Interstate Gravel Pit Buffer Plan, *Hayden, ID*
The Ridge at Cougar Bay Residential Development, *Coeur d'Alene, ID*
Tubbs Hill Water Tank Mitigation Measures, *Coeur d'Alene, ID*
University of Idaho Boiler Enhancements, *Moscow, ID*
Hidden Lakes Golf Course Wetlands Study, *Hope, ID*
Priest Lake Golf Course Wetland Mitigation, *Priest Lake, ID*
Bottle Bay Housing Wetland Studies, *Sandpoint, ID*
Carter Ferry Hydroelectric Facility Mitigation Measures, *Great Falls, MT*

Commercial/Mixed Use Master Planning & Development:

Ednetics Corporate Headquarters, *Post Falls, ID*
Ground Force Corporate Headquarters, *Post Falls, ID*
Turning Pointe Industrial Park, *Clarkston, WA*
The Bayview Project, *Bayview, ID*
Atlas Millsite Conceptual Planning, *Coeur d'Alene, ID*
Rockford Bay Country Club, *Kootenai County, ID*
Hidden Lakes Golf Course Redevelopment, *Sandpoint, ID*
Twin Lakes Village Golf Course, *Twin Lakes, ID*
Teton Pines Golf Community, *Jackson, WY*
University of Idaho Research Park, *Post Falls, ID*
Lee Canyon R.V. Resort, *Las Vegas, NV*
Section 5 Master Land Use Plan, *Elko, NV*
Riverstone Mixed Use Development, *Coeur d'Alene, ID*



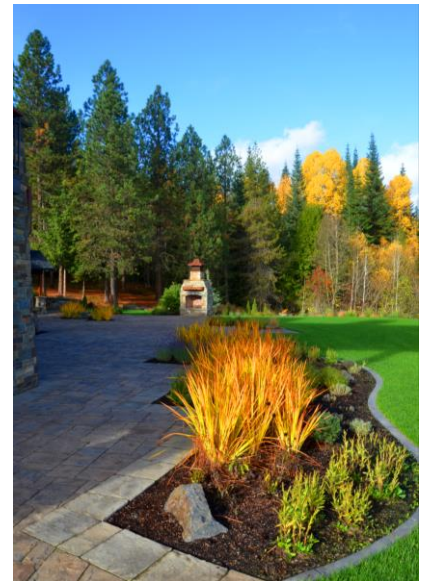


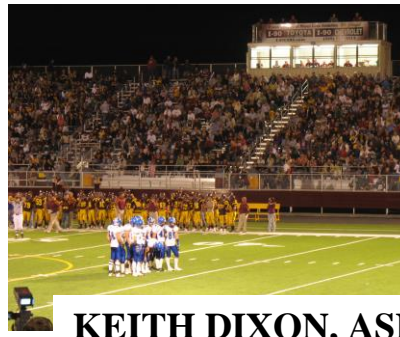
Residential Planning & Design Projects:

- Buttercup Housing, *Colville Nation*
- Eagle's Nest Housing, *Colville Nation*
- Tshmigan Meadows Housing, *Spokane Nation*
- Aspens Resort, *Jackson, WY*
- Fieldstone Mixed Use Community, *Post Falls, ID*
- Sun Meadow Residential Community, *Coeur d'Alene, ID*
- Stoddard Meadow Residential Community, *Hayden, ID*
- Foxtail Residential Community, *Post Falls, ID*
- Mader Ranch Residential Community, *Pullman, WA*
- The Ridge at Cougar Bay, *Coeur d'Alene, ID*
- Colstrip Townsite Expansion, *Colstrip, MT*

Residential Planning & Design Projects:

- Swanby Residence, *Lake Coeur d'Alene, Idaho*
- Bella Terra Residential Development, *Spokane, WA*
- Small Residence, *Spirit Lake, Idaho*
- Stegmann Residence, *Rathdrum, Idaho*
- Simpson Residence, *Lake Coeur d'Alene, Idaho*
- Berdan Residence Conceptual Plan, *Spokane, Washington*
- Quartin Residence, *Lake Coeur d'Alene, Idaho*
- Vaughn Residence, *Ruby Mountains, Nevada*
- HRH Prince Bandar Palace Grounds, *Saudi Arabia*
- HRH Prince al-Faisal Palace Grounds, *Saudi Arabia*
- Nucci Residence, *Boise, Idaho*





KEITH DIXON, ASLA

Principal Landscape Architect / Keith will act as a design resource to the project and will coordinate the efforts of the documents search with the other team members.

Education:
BACHELOR OF LANDSCAPE
ARCHITECTURE
1989
UNIVERSITY OF IDAHO

Registration:
LANDSCAPE ARCHITECT:
IDAHO, WASHINGTON, MONTANA,
OREGON, CLARB CERTIFICATE #933

Employment:
LANDMARK/ARCHITECTS WEST
COEUR D' ALENE, IDAHO
1989-PRESENT

Affiliations:
AMERICAN SOCIETY OF LANDSCAPE
ARCHITECTS, IDAHO- MONTANA (IMC)
CHAPTER; President 2006-07

POST FALLS URBAN FORESTRY
COMMITTEE,
1995-97, CHAIR

COMMUNITY CANOPY,
2003-06

KOOTENAI COUNTY PLANNING &
ZONING COMMISSION;
MEMBER 2003-06

LEADERSHIP COEUR D' ALENE,
GRADUATE 2001

**Professional
Recognition:**

MERIT AWARD
LAKE CITY HIGH SCHOOL
IDAHO/MONTANA ASLA
1997



MERIT AWARD
LES BOIS JUNIOR HIGH SCHOOL
IDAHO/MONTANA ASLA
1993

PROJECT OF DISTINCTION
FERNAN ELEMENTARY
COUNCIL OF EDUCATION
FACILITY PLANNERS
INTERNATIONAL 1994

Mr. Dixon is a principal landscape architect and directs the efforts of the landscape architects and land planners at Architects West. He has an extensive background in site planning and development design for institutional, commercial, and recreational projects throughout the Northwest.

Mr. Dixon is responsible for coordinating all phases of project development from analysis to design to construction administration. He believes the success of any project is dependent upon a collaborative effort between the client, design team, and contractor. His extensive experience and hands-on style ensure projects meet the requirements of the client.

Representative Projects:

Parks & Recreation Planning & Design

- Kroc Community Center, *Coeur d'Alene, ID*
- Landings Park, *Coeur d'Alene, Idaho*
- Dog Park, *Coeur d'Alene, Idaho*
- Lion's Field Artificial Turf Field & Sports Complex, *Moses Lake, WA*
- Sacred Encounters at Old Mission State Park, *Cataldo, Idaho*
- Shaddock Lane Park, *Coeur d'Alene, Idaho*
- Friendship Park, *Spokane, Washington*
- Underhill Park, *Spokane, Washington*
- Sunset Park, *Coeur d'Alene, ID*
- Blackwell Island RV Park, *Coeur d'Alene, ID*

Religious Facility Design

- His Place Church, *Post Falls, ID*
- Christ Lutheran Church, *Whitefish, MT*
- Coeur d'Alene Bible Church, *Coeur d'Alene, ID*
- Spokane Valley Nazarene Church, *Spokane, WA*
- Emmanuel Lutheran Church, *Spokane, WA*
- St. Mary's Church, *Chewelah, WA*
- Grace Evangelical Church, *Colville, WA*
- St. Joseph's Catholic Church, *Spokane, WA*

Commerical/Institutional Design

- Coldwell Banker Schneidmiller Realty Office Building, *Coeur d'Alene, ID*
- Silver Mountain Resort Projects: Gondola Village Site Design, *Kellogg, ID*
- Panhandle Health District, *Hayden, ID*
- Hyundai Automotive Dealership, *Post Falls, ID*
- Waste Management's Vehicle Maintenance Facility, *Coeur d'Alene, ID*
- Foretravel Northwest, *Liberty Lake, WA*
- Century 21 John Beutler Associates, *Coeur d'Alene, ID*
- Travel Management, Inc., *Post Falls, ID*
- Spokesman Review Building, *Coeur d'Alene, ID*



Professional Recognition:

MERIT AWARD
SHARPSTEIN ELEMENTARY SCHOOL
IDAHO/MONTANA ASLA
2003



HONOR AWARD
PANHANDLE HEALTH BUILDING
IDAHO/MONTANA ASLA
2007



Education Facility Planning & Design

- West Valley High School, *Yakima, WA*
- Edison Elementary School, *Walla Walla, WA*
- Sharpstein Elementary School, *Walla Walla, WA*
- Kittitas Secondary School, *Kittitas, WA*
- Atlas Elementary School, *Coeur d'Alene, ID*
- Wahluke High School, *Mattawa, WA*
- Central Middle School, *Whitefish, MT*
- Big Fork Elem./Jr. High, *Big Fork MT*
- Ronan Middle School, *Ronan, MT*
- Dalton Elementary Playground, *Dalton Gardens, ID*
- ESD 101 Parking Expansion, *Spokane, WA*
- Adams Elementary School, *Veradale, WA*
- McDonald Elementary School, *Spokane Valley, WA*
- Chewelah Peak Learning Center, *Chewelah, WA*
- Westridge Elementary School, *Post Falls, ID*
- Michael Anderson Elementary School, *Fairchild Air Force Base, WA*
- Coeur d'Alene High School Renovation, *Coeur d'Alene, Idaho*
- University of Idaho AES/FMO/PD Complex, *Moscow, ID*
- Lake City High School, *Coeur d'Alene, ID*
- Timberline High School, *Boise, ID*
- Post Falls High School, *Post Falls, ID*
- West Valley Middle School, *Yakima, WA*
- University of Idaho Motor Pool, *Moscow, ID*
- Riverglen Jr. High School, *Boise, ID*
- Skyway Elementary, *Coeur d'Alene, ID*
- Lakeside Middle School, *Nine Mile Falls, WA*
- Bishop Kelley High School Gym and Master Plan, *Boise, ID*
- Umatilla High School, *Umatilla, OR*
- Les Bois Jr. High School, *Boise, ID*
- Bridgeport Middle/High School, *Bridgeport, WA*
- Tonasket High School All-Weather Track, *Tonasket, WA*
- Brewster Middle/High School, *Brewster, WA*
- Okanogan Elementary School, *Okanogan, WA*
- Brewster Middle/High School, *Brewster, WA*



Impact Mitigation

- Washington Water Power Combustion Turbine, *Rathdrum, Idaho*
- Interstate Gravel Pit Buffer, *Hayden, Idaho*



Michael Galante

5705 N Hermosa Ct. Otis Orchards, WA 99027
Cell: 208-661-9182 mikegalante.1@gmail.com

Executive Summary

Experienced general manager with strong leadership and relationship building skills. Project management skills, with strong ability to communicate effectively with customers, employees and business audiences.

Professional Experience

District Manager

April 2005 to April 2018

North Kootenai Water & Sewer District – Kootenai County Idaho - Full charge manager for 15 public water and 1 wastewater system

Accomplishments

- Board of County Commissioners appointment to the Aquifer Protection District (APD)
- Achieved Professional Human Resources certification (PHR)
- Plan and develop infrastructure improvements to an aging water district - \$6.5 mil. In completed projects in 36 months
- Prepare and submit to board of directors annual budget - \$3 million revenue
- Acquisition and expansion of existing facilities, doubled District size in 7 years
- Secure Low Interest Loans (\$800K @ .25% Int. 30 yr.) (\$1.25 mil. 2.25% 20 yr.) for expansion of services to areas adjacent to existing service areas
- Initiated District's GIS mapping program
- Initiated and worked with engineering consultant to create a Water Conservation Plan
- Plan and install VFD pumping stations, energy saving of 22%
- Initialed and implemented radio read meter program, 50% labor savings on monthly meter reading cost
- Develop and recommend policy to elected board of directors
- Leadership of District's staff- customer service emphasis
- Daily administration in all phases of business operation
- HR responsibilities, hiring, employee performance reviews, disciplinary action, salary reviews, establish training programs for employees
- Created new Employee Manual – ensure employee understand and adhere to District policies and procedures
- Project planning with engineering consultants
- Resolve legal issues facing the District with legal counsel
- Risk Manager for the District – PRIMA risk management trained/certification
- Inter-agency relationships with Idaho Department of Environmental Quality, Idaho Department of Water Resources, Panhandle Health District, worked directly with these agencies
- Initiated drug testing program – Drug Free Workplace
- Initiated and conducted District's Safety Program
- Ability to express myself clearly and concisely both in writing and verbally
- Ability to plan, supervise, and coordinate long range projects
- I work well with others to achieve common goals
- Ability to interpret current legislation, rules and regulations – March 2018 secured renewal of wastewater discharge permit from IDEQ

Board President/Water Master

January 1989-March 2005

Honeysuckle Hills Owners Association-Hayden Idaho – Responsible Charge Operator for public water system supplying 205 active connections

Accomplishments

- Responsible for all phases of water system distribution including coordination of repairs, taking water samples, compliance activities
- Reported to Owners Association Board of Directors on monthly system status
- Read water meters monthly during spring, summer, and fall
- Handle customer complaints
- Coordinated construction activity with engineers and contractors
- Served as Board President
- Secured low interest loan from IDEQ for infrastructure improvements
- Coordinated annexation and conveyance agreements from HHOA to NKWSD

Business Owner

June 2001 to March 2005

Advanced Water Technologies dba Kinetico Quality Water –Spokane, Washington

Owned and managed water filtration company, residential and commercial water filter sales and service

Accomplishments

- Increased sales at Kinetico from \$250K to \$856K in 3 years
- Commercial filter/softener installations for Northern Quest Casino, The Davenport Hotel, Warrior Restaurant at Fairchild AFB, Anheuser Busch hop farm, Usk Paper Mill

General Manager- Project Manager

September 1986 to June 2001

H2O Well Service – Hayden, Idaho

Water well installation, pump system contractor for northern Idaho and eastern Washington. Experience in drilling techniques, water system design, installation, wastewater pumping systems

Accomplishments

- I had a direct role in increasing company sales from \$800K to over \$2.5 mil
- Gained substantial knowledge of geology of northern Idaho and eastern Washington
- Work with hydro-geologists on drilling projects
- Effective project manager for commercial and residential water systems & wastewater systems
- Gained substantial knowledge of pumps, electrical controls, hydraulic valves
- Worked with engineering consultants on system designs

Education & Certifications

Eastern Michigan University – Ypsilanti Michigan

Economics/Business

Bachelor of Science, Economics

Idaho DWD-3 Drinking Water Distribution Certification, DWT-2 Drinking Water Treatment Certification WWT-OIT Wastewater Treatment

Professional Human Resources Certification (PHR) – Human Resources Certification Institute

Certified Risk Management – PRIMA Idaho Risk Managers Association

Affiliations

- American Water Works Association
- American Backflow Prevention Association
- CAMP- Comprehensive Aquifer Management Planning, advisory committee for the Rathdrum Prairie Aquifer to the Idaho Water Resource Board
- IWAC- Idaho Washington Aquifer Collaborative – current president
- KCUC- Kootenai County Utility Council (811, Call Before You Dig) past board president, current council member
- INSHRM Inland Northwest Society of Human Resource Managers
- SHRM (national) Society of Human Resource Mangers
- Spokane Valley- Rathdrum Prairie Aquifer Atlas – 2015 Edition planning/implementation committee
- Idaho Water Users Association
- PRIMA Idaho Risk Managers Association
- Kootenai County - Aquifer Protection District Board